



SINTEF

# Wicked Problems

... And partnerships to tackle them

Volker Hoffmann <Volker.Hoffmann@sintef.no>



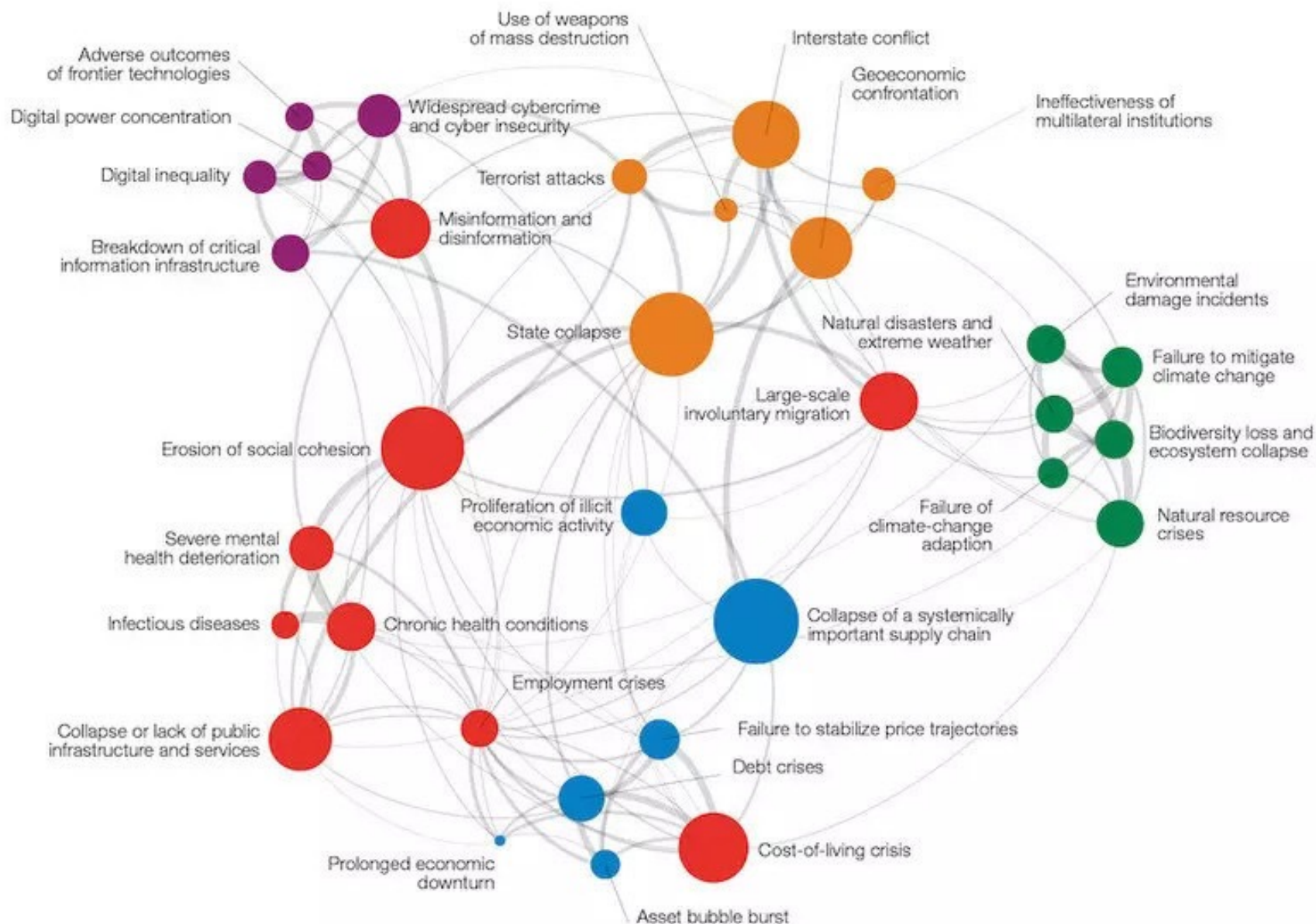


**"We are on the highway to hell  
with the foot on the accelerator"**





SINTEF



Technology for a better society



**SINTEF**

# Research & Innovation Partnerships

**Norwegian  
Industry**

**Norwegian  
Public  
Sector**

**European  
R&I  
Projects**

**Norwegian  
and  
European  
Networks**

**Grassroots  
Dialogues**

**Strategic  
Dialogues**

**Direct  
Projects**





SINTEF

# (IPO) VisMeg



**Pasientscenario (30 min)**

Du mottar dette prøvesvaret:  
M 69701 (LSIL): Definisjon: Lavgradig skvamøs intraepitelial lesjon. Tilsvaret CIN1.  
Refleks HPV er positiv (ikke type 16/18)

Tenk selv:  
Hvordan går du fram for å forstå prøven?  
Hvordan legger du det fram for pasienten?

Skriv ned lapper individuelt og heng på vegg i denne situasjonen?  
Hvilke utfordringer møter du i denne situasjonen? Hva kunne vært bedre?

Teknologi for et bedre samfunn

**Pasientscenario (30 min)**

Du mottar dette prøvesvaret:  
M 69701 (LSIL): Definisjon: Lavgradig skvamøs intraepitelial lesjon. Tilsvaret CIN1.  
Refleks HPV er positiv (ikke type 16/18)

Tenk selv:  
Hvordan går du selv frem for å forstå prøven?  
Hvordan legger du det fram for pasienten?

Skriv ned lapper individuelt og heng på vegg i denne situasjonen?  
Hvilke utfordringer møter du i denne situasjonen? Hva kunne vært bedre?

Teknologi for et bedre samfunn

**Pasientscenario (30 min)**

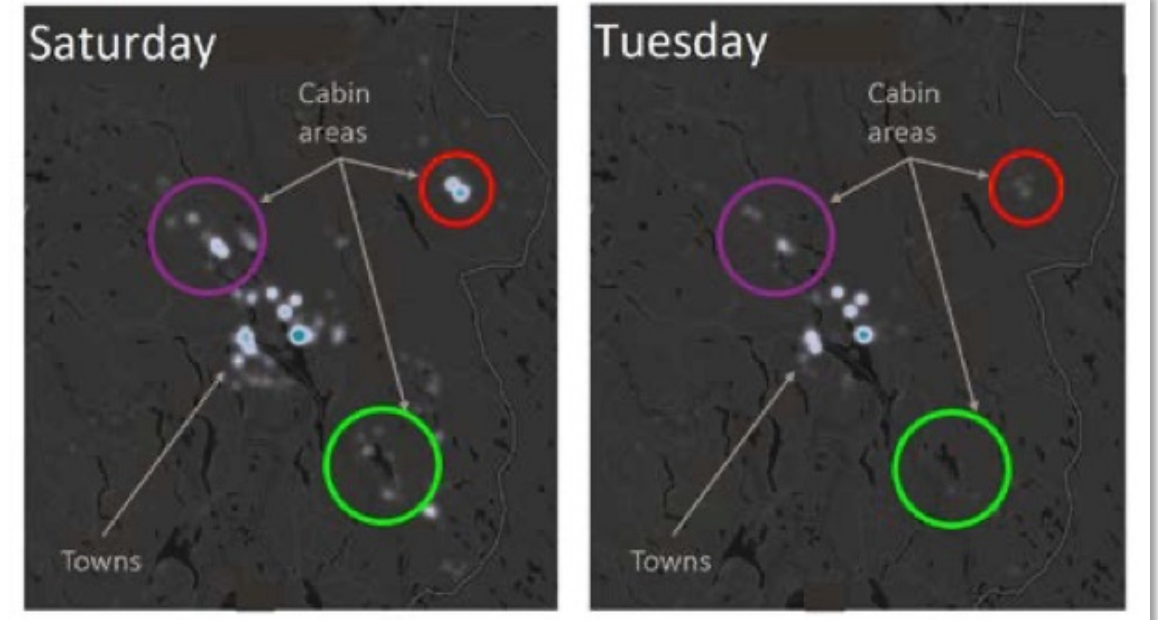
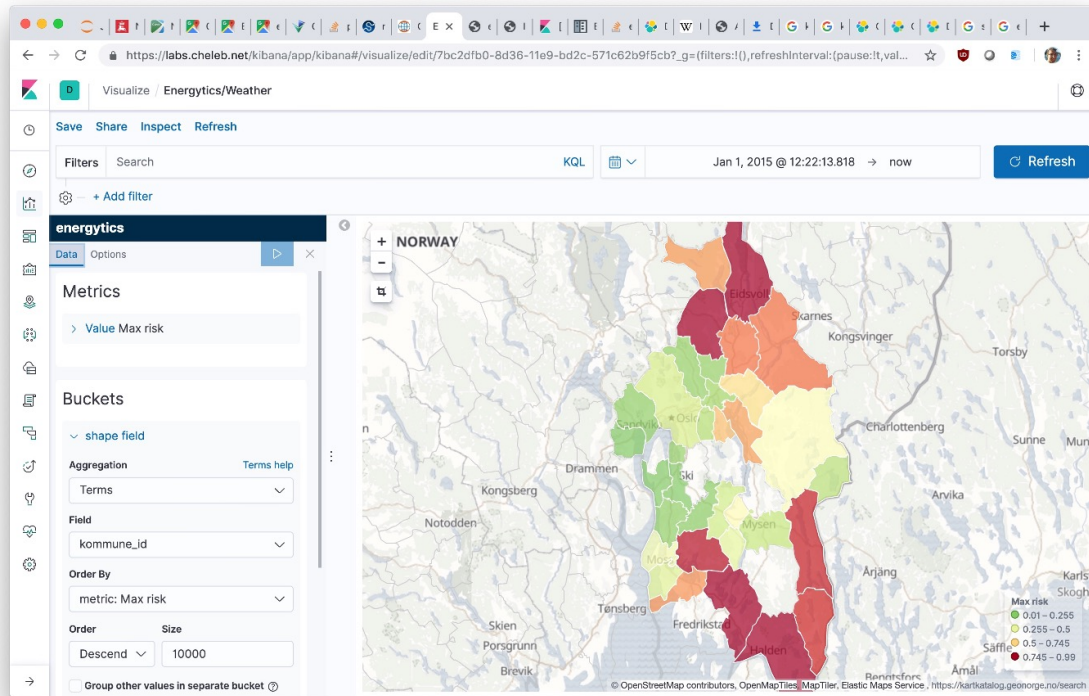
Du mottar dette prøvesvaret:  
M 69701 (LSIL): Definisjon: Lavgradig skvamøs intraepitelial lesjon. Tilsvaret CIN1.  
Refleks HPV er positiv (ikke type 16/18)

Tenk selv:  
Hvordan går du selv frem for å forstå prøven?  
Hvordan legger du det fram for pasienten?

Skriv ned lapper individuelt og heng på vegg i denne situasjonen?  
Hvilke utfordringer møter du i denne situasjonen? Hva kunne vært bedre?

Teknologi for et bedre samfunn

# (IPN) Energytics







SINTEF

# (KPN/KSP) EarlyWarn



Adobe Firefly (Beta)  
Image Not for Commercial Use





SINTEF

# (HEU) ILIAD

## DESTINATION EARTH

### A DIGITAL REPLICA OF OUR PLANET

Destination Earth (**DestinE**) aims to develop a highly accurate digital model of Earth to monitor the effects of natural and human activity on our planet, anticipate extreme events and adapt policies to climate-related challenges.



ECMWF

esa

EUMETSAT

## Iliad: Digital twin of the ocean

ILIAD's ambition is to create an infrastructure for digital twins of ocean spaces with both a marine and maritime perspective. The system will combine existing and new ocean modelling systems and ocean observatories in a common platform, and will make use of existing data collection systems, including new sensor technologies. The project is part of a larger collaboration between a number of projects under the EU's Green Deal and Mission Ocean programme. SINTEF is responsible for coordinating the technical architecture for digital twins, as well as for pilot applications for past, present and future ocean data in interaction with digital twin applications for offshore wind farms, pollution, aquaculture, biodiversity, sea freight and ports.



THE PROJECT IS FUNDED  
BY HORIZON 2020



THE PROJECT ALSO CONTRIBUTES TO:

UN SDGs – Goal 9 — 18





SINTEF

# (Networks) Europe & EERA & BDVA & AI4EU



Technology for a better society



SINTEF

# (Grassroots Dialogue) Siemens







SINTEF

# Conclusion

The world is full of “wicked problems”

Partnerships are the only way to solve them



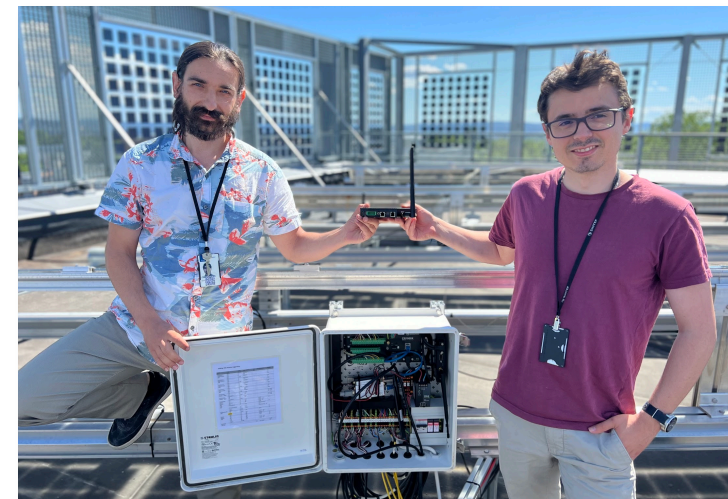
# Solar Panel Lab





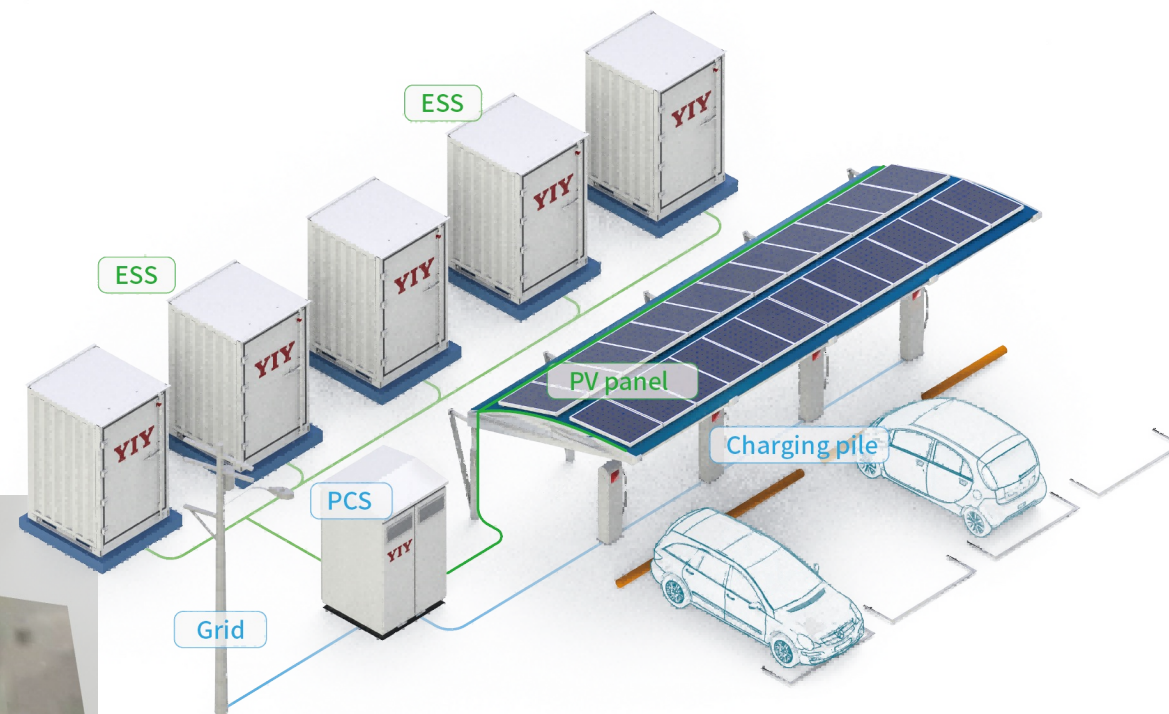
SINTEF

# Solar Panel Lab



Technology for a better society

3D perspective view of the building layout showing the roof structure, internal walls, and the placement of solar panels on the roof. Dimensions are provided for the roof areas and panel spacing.





SINTEF

Technology for a better society